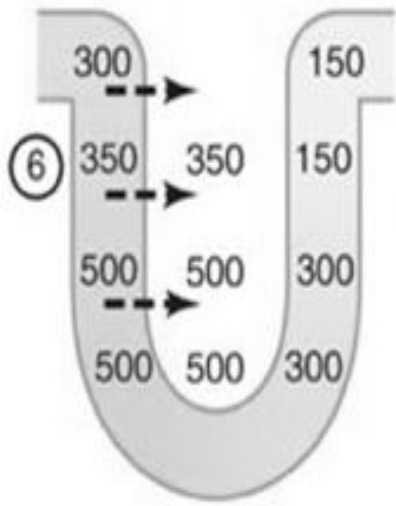
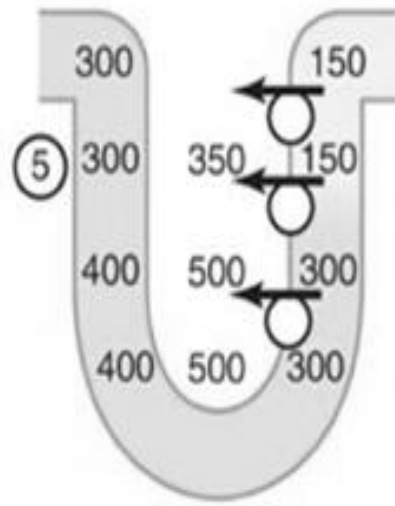
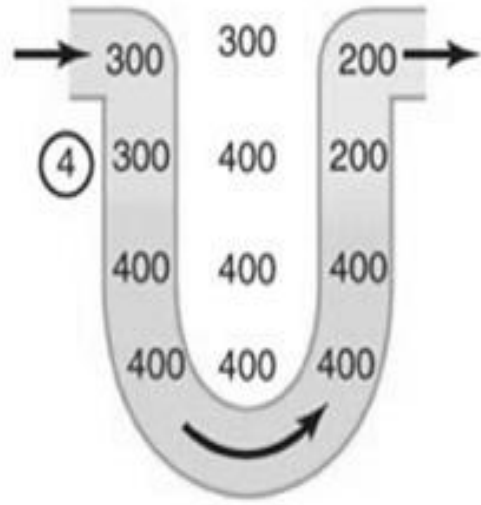
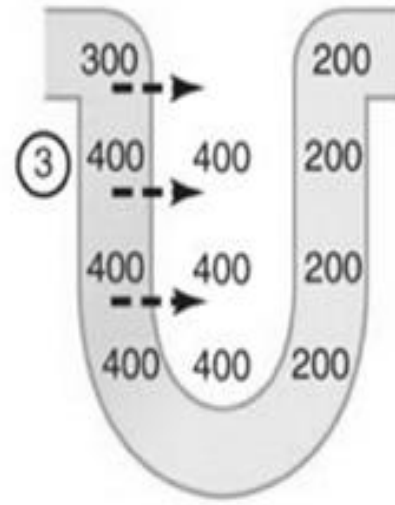
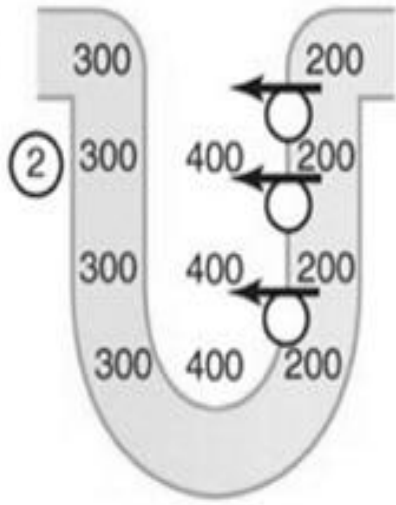
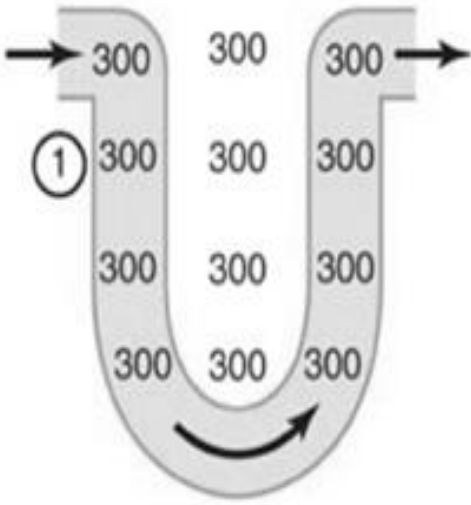
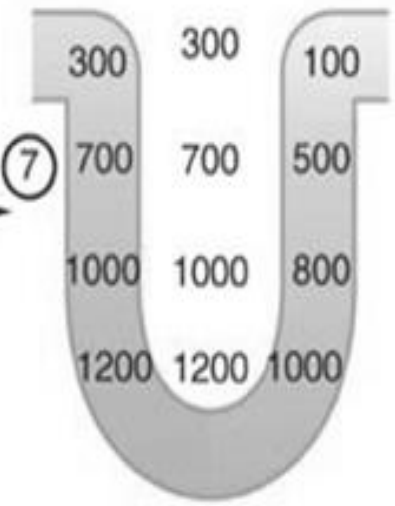


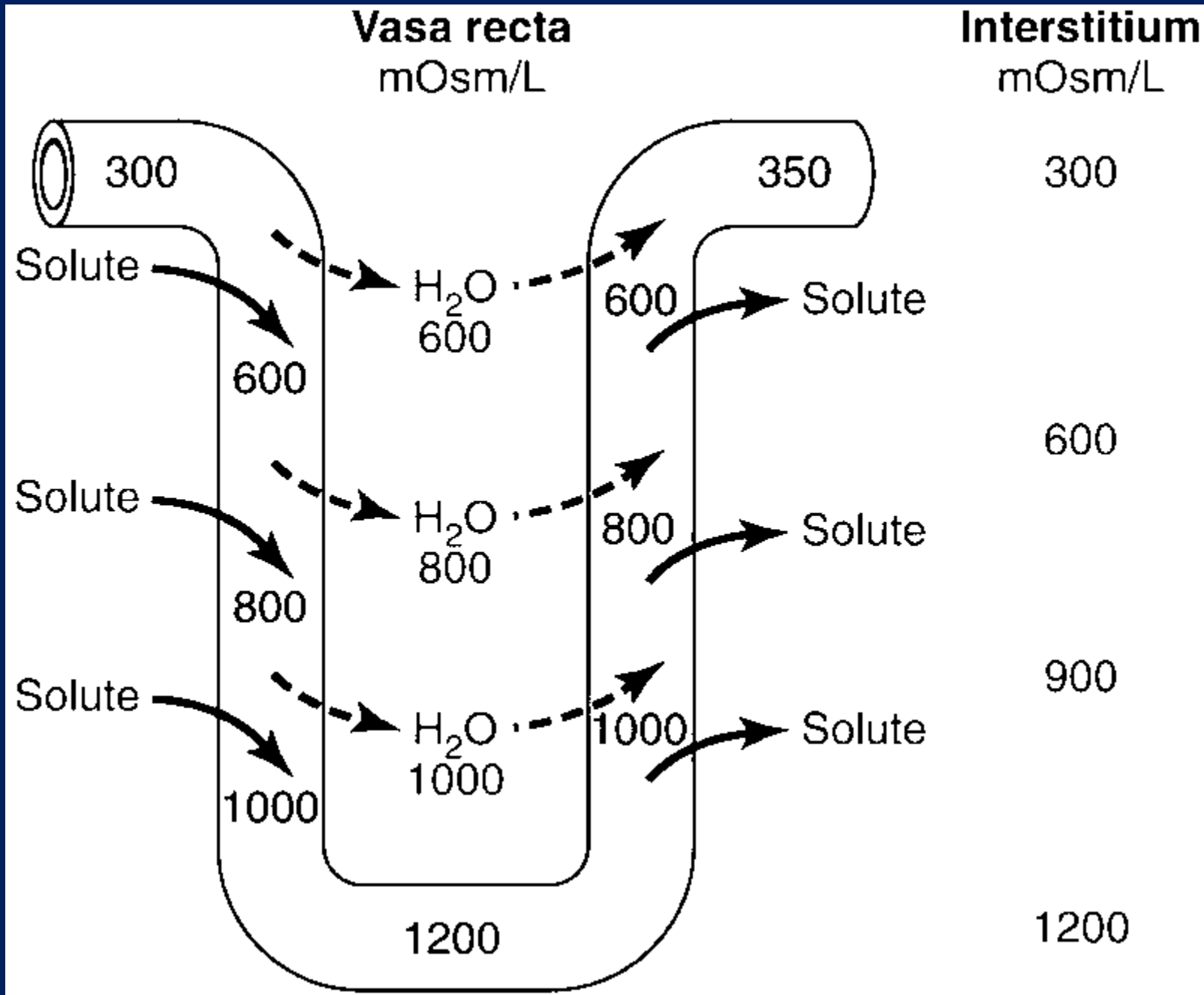
# Urine Concentration

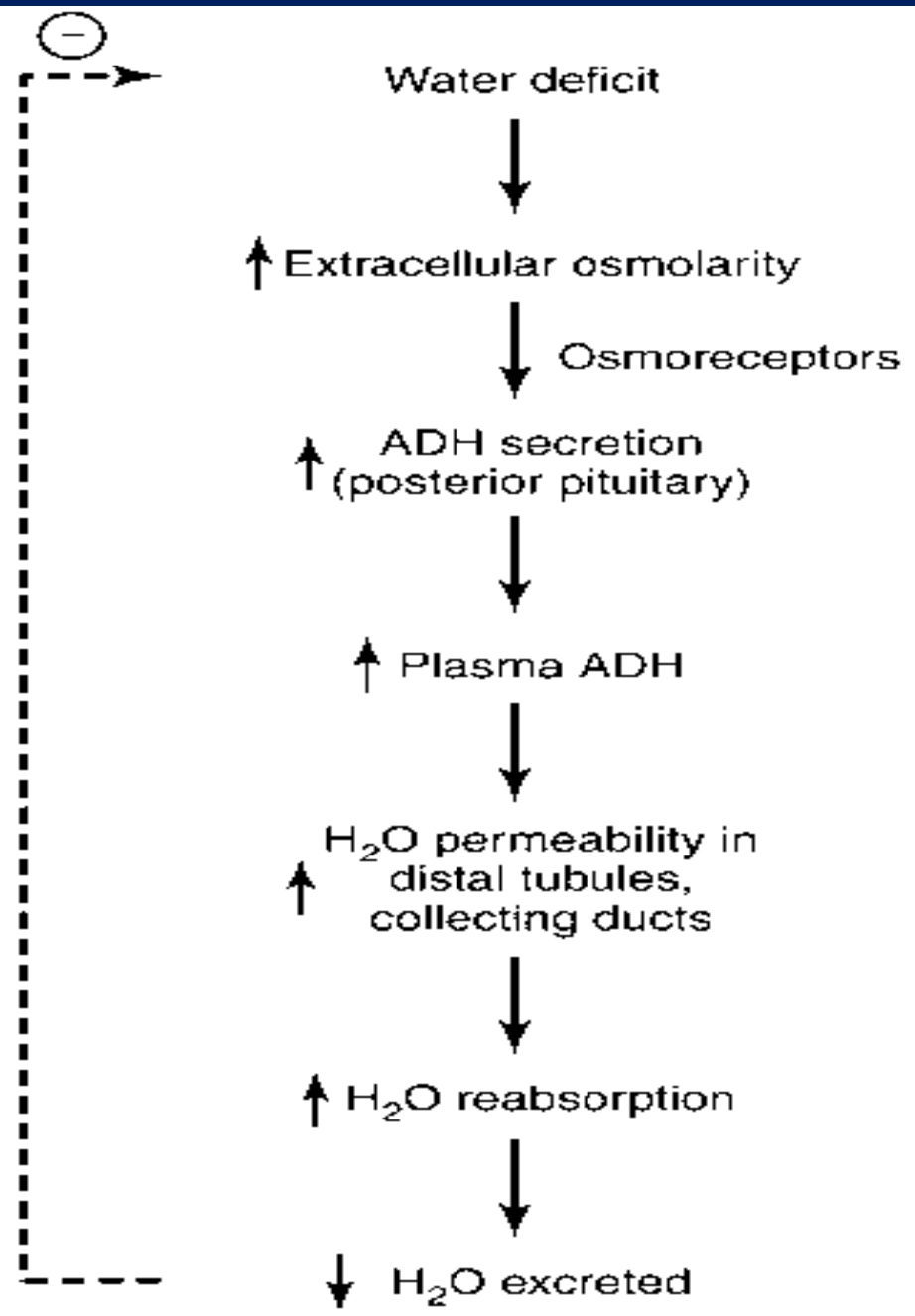
- Basic requirements for excreting a concentrated urine are:
  - High level of ADH
  - High osmolarity of renal medullary interstitial fluid



Repeat Steps 4-6







# ADH release

➤ Affected by:

- Plasma osmolarity
- Blood volume
- Blood pressure
- Drugs

# Circulating hormones

- Angiotensin II
- Relaxin
- ANP

